

**LEO** 浙江利欧股份有限公司  
ZHEJIANG LEO CO.,LTD.

Center avenue, Industrial park,  
Wenling, Zhejiang, China, 317500  
Tel: +86-576-89988888  
Fax: +86-576-89989898  
<http://www.chinapumps.com>  
E-mail: [wxr@chinapumps.com](mailto:wxr@chinapumps.com)



Love Each Other

## STANDARD CENTRIFUGAL PUMPS

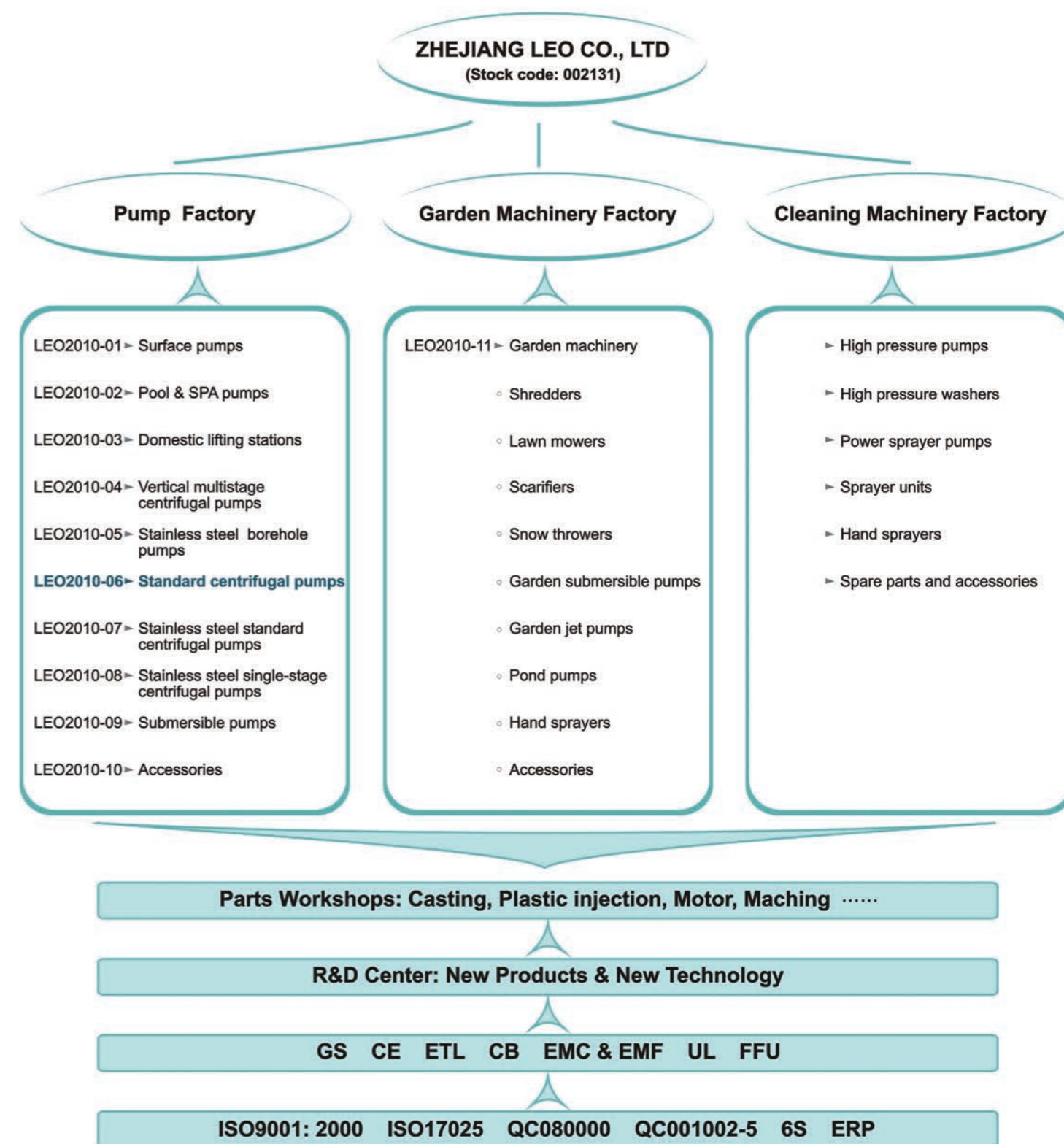
LEO2010-06

[www.chinapumps.com](http://www.chinapumps.com)



浙江利欧股份有限公司  
ZHEJIANG LEO CO.,LTD.

# COMPANY PROFILE





# CONTENTS

● APPLICATIONS	01	● HYDRAULIC PERFORMANCE CURVES FOR XST40-125	08
● OPERATING CONDITIONS	01	● HYDRAULIC PERFORMANCE CURVES FOR XST40-125	09
● MOTOR	01	● HYDRAULIC PERFORMANCE CURVES FOR XST40-200	10
● CONSTRUCTION FEATURES	01	● HYDRAULIC PERFORMANCE CURVES FOR XST40-250	11
● ACCESSORIES ON REQUEST	01	● HYDRAULIC PERFORMANCE CURVES FOR XST50-125	12
● LIST OF MODELS-XST SERIES,50HZ, 2-POLE	02	● HYDRAULIC PERFORMANCE CURVES FOR XST50-160	13
● CHARACTERISTIC CURVES-XST SERIES,50HZ, 2-POLE	04	● HYDRAULIC PERFORMANCE CURVES FOR XST65-125	14
● HYDRAULIC PERFORMANCE CURVES FOR XST32-125	05	● INSTALLATION DIMENSIONS	15
● HYDRAULIC PERFORMANCE CURVES FOR XST32-160	06	● INSTALLATION SKETCH	16
● HYDRAULIC PERFORMANCE CURVES FOR XST32-200	07	● FLANGE DIMENSIONS	17

## APPLICATIONS

- Circulation and transfer of clean, chemically non-aggressive water and other liquids
- Water supply & irrigation
- Water circulation in air conditioning systems

## OPERATING CONDITIONS

- Delivery: up to 220m<sup>3</sup>/h
- Head: up to 95m
- Liquid temperature  
Standard: -10°C to 85°C    Upon request: -20°C to 120°C
- Maximum operating pressure: 12 bar(PN12)
- Anti-clockwise rotation when facing pump's suction port
- Impeller: AISI304/AISI316
- Mechanical seal in compliance with DIN 24960
- Lubricated by internal recirculating
- Housing sealed by pumped liquid
- Counter flange available on request

## MOTOR

- Three-phase\* asynchronous, squirrel cage rotor
- Closed construction, external ventilation
- Protection class: IP55
- Insulation class: 155
- Performance in compliance with CEI 2–3(IEC 34.1)
- Max. ambient temperature: +40°C
- Overload protection
- Compressive type drainage plugs on all motors

## CONSTRUCTION FEATURES

- Single-impeller centrifugal pump featuring axial intake and radial discharge
- Inlet and outlet DN in compliance with EN 733(ex DIN 24255)and UNI 7467
- Flanges in compliance with UNI 2236 and DIN 2532
- Rear entry;(impeller, control valve and motor can be extracted without disconnecting the pump body from the pipes)

## ACCESSORIES ON REQUEST

- AISI 316 stainless steel or galvanised iron threaded counter flanges
- Flanged tapered coupling
- Pump and motor sealing gasket

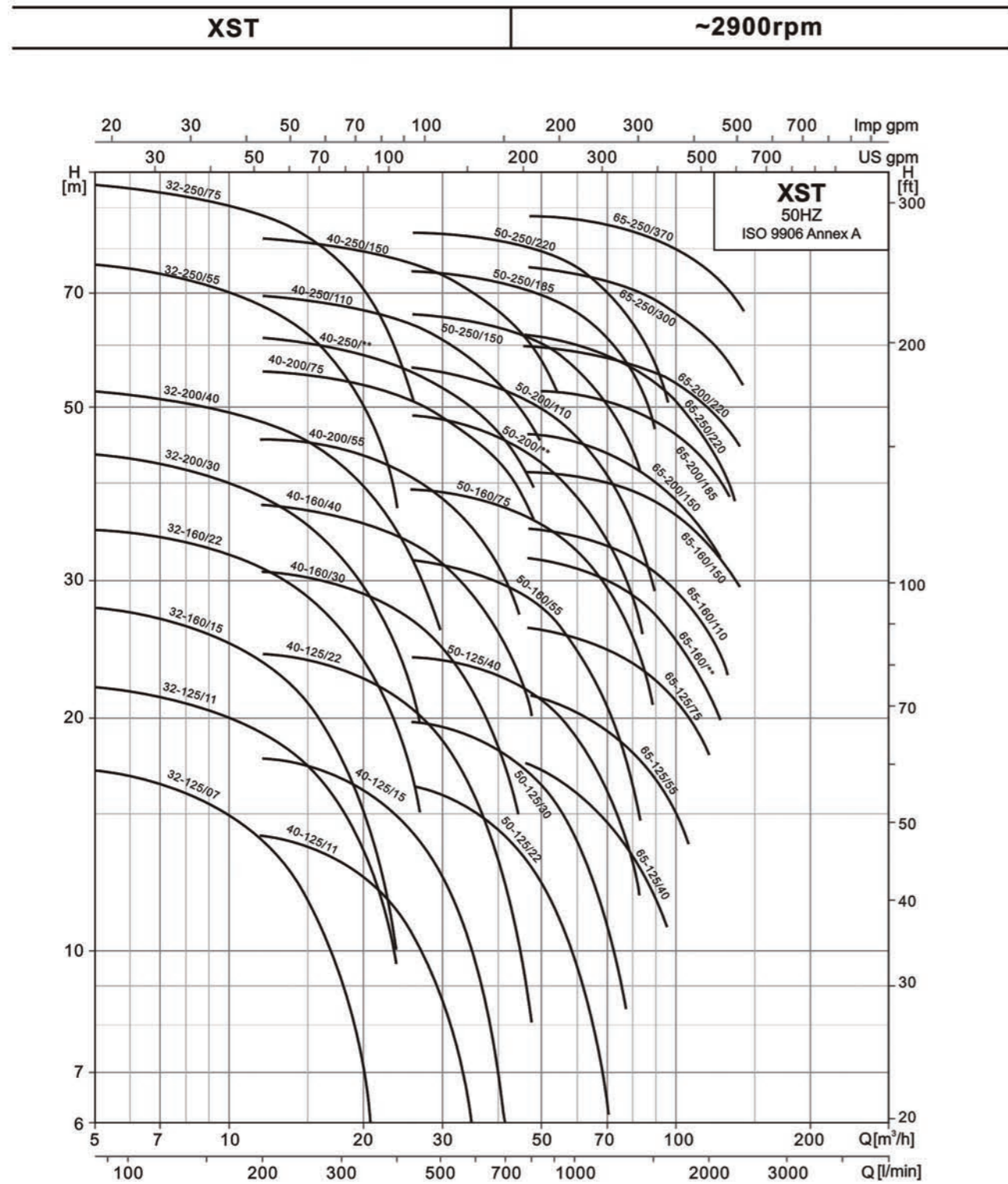


## LIST OF MODELS-XST SERIES,50HZ, 2-POLE

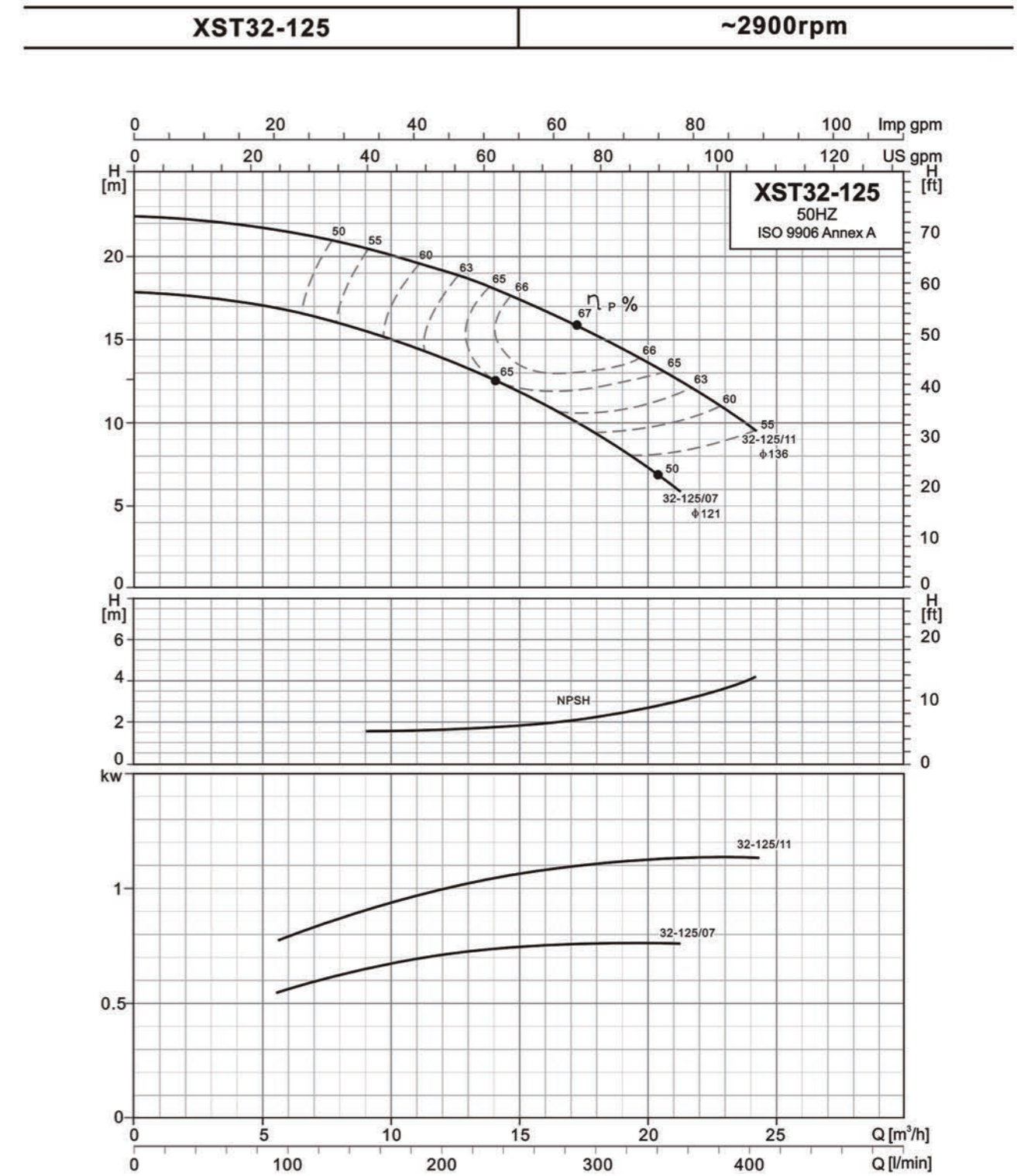
PUMP TYPE	POWER		Q(l/min) Q(m³/h)	Q=DELIVERY																					
	kW	HP		0	100	150	200	250	300	400	500	600	700	800	1000	1200	1400	1600	1800	2000	2300	2500	3000	3600	
				0	6	9	12	15	18	24	30	36	42	48	60	72	84	96	108	120	138	150	180	216	
32-125/07	0.75	1	H(m)	18	16.7	15.5	13.9	11.8	9.2																
32-125/11	1.1	1.5		22.5	21.5	20.5	19	17.4	15.2	9.7															
32-160/15	1.5	2		28.7	27	25.5	23.5	21	17.8	10															
32-160/22	2.2	3		35.7	34.3	33	31	28.6	25.8	19.2															
32-200/30	3	4		46.5	43	40.5	38	35.5	32	24.5															
32-200/40	4	5.5		54.5	52	50	47.5	45	42	34.5	26														
32-250/55	5.5	7.5		79	74.4	71	67	62	55.6	37															
32-250/75	7.5	10		99	95.3	92	88	83	76	58.3															
40-125/11	1.1	1.5		14.5				13.7	13	11.3	8.8	5.8													
40-152/15	1.5	2		18.1				17.2	16.7	15	12.7	9.6	6												
40-125/22	2.2	3		24.5				23.5	23	21	18.8	15.8	12.3	8.2											
40-160/30	3	4		31.5				30	29.5	27.5	24.5	21.5	17.4												
40-160/40	4	5.5		38				37	36	34	31.5	28.5	24.5	20											
40-200/55	5.5	7.5		46.5				45	44	41.5	38.5	34.5	29.5												
40-200/75	7.5	10		57				55	54	52	49	45.5	41	36											
40-250/110	11	15		72				68	67	65	61	67	52	47											
40-250/150	15	20		85				81	80	77	74	70	65	60											
50-125/22	2.2	3		17							16	15.1	14	12.8	9.8	6.2									
50-125/30	3	4		20							19.5	18.8	18	16.9	14.1	10.5									
50-125/40	4	5.5		24							23.5	23	22.5	21.5	19	15.8	11.8								
50-160/55	5.5	7.5		32							31.5	30.5	29.5	28	24.5	20.5	14.8								
50-160/55	7.5	10		40							39	38	37	36	33	29	24								
50-200/110	11	15		58							55	54	53	50	46	40	33								
50-250/150	15	20		68							65	64	63	61	56	50	41								
50-250/185	18.5	25		77							74	73	72	70	66	60	52								
50-250/22	22	30		86							84	83	81	80	75	70	61	51							
65-125/40	4	5.5		19									17.5	16	14.5	13	11								
65-125/55	5.5	7.5		23									21.5	20.5	19	17.5	16	14							
65-125/75	7.5	10		27									26	25	24.5	23	22	20	18						
65-160/110	11	15		36									35	34	33	31.5	30	28	25.5						
65-160/150	15	20		42									41.5	41	40	38.5	37	35	33	29.5					
65-200/150	15	20		45									46	45	43	41	39	36.5	34						
65-200/185	18.5	25		52									53	52	51	49	47	44.5	42						
65-200/220	22	30		59									60	59	58	56	54	52	49.5	44.5					
65-250/220	22	30		62									62	60	58	55.5	52	48.5	44	36.5					
65-250/300	30	40		76									75	74	73	70.5	67.5	64	61	54					
65-250/370	37	50	90									88.5	87	86	84	81	78	74.5	68.5						



**CHARACTERISTIC CURVES-XST SERIES,50HZ, 2-POLE**

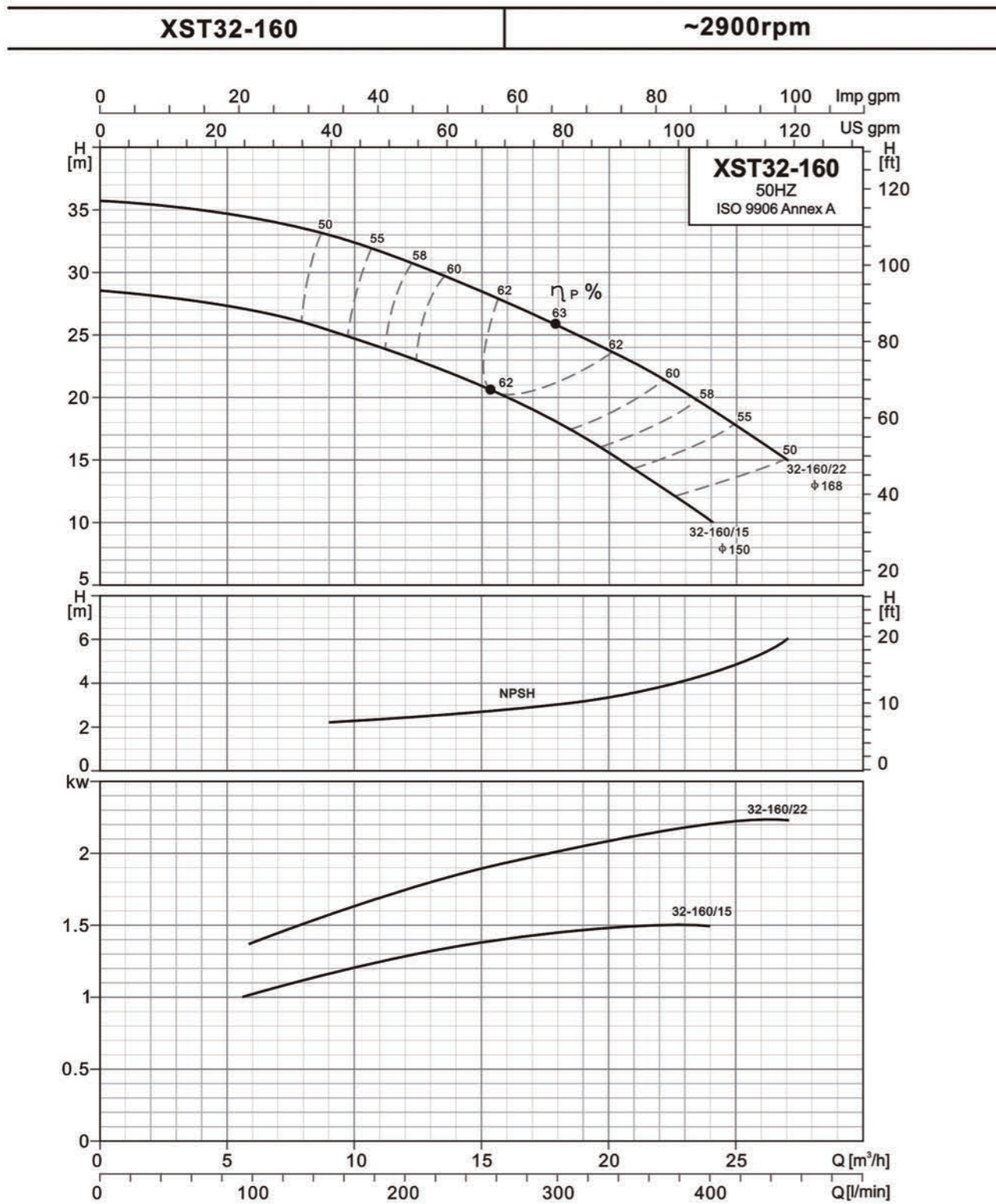


**HYDRAULIC PERFORMANCE CURVES**

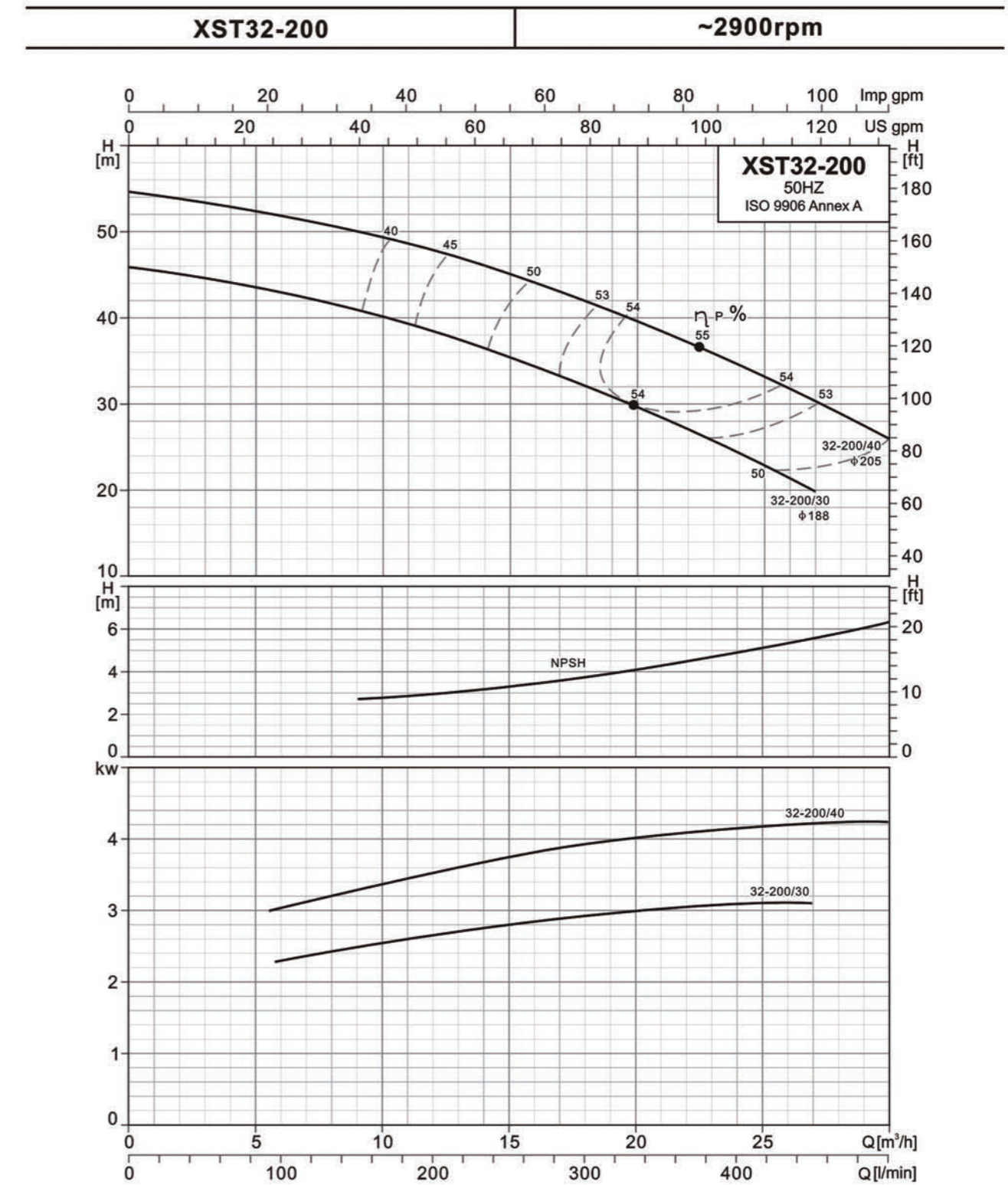




HYDRAULIC PERFORMANCE CURVES

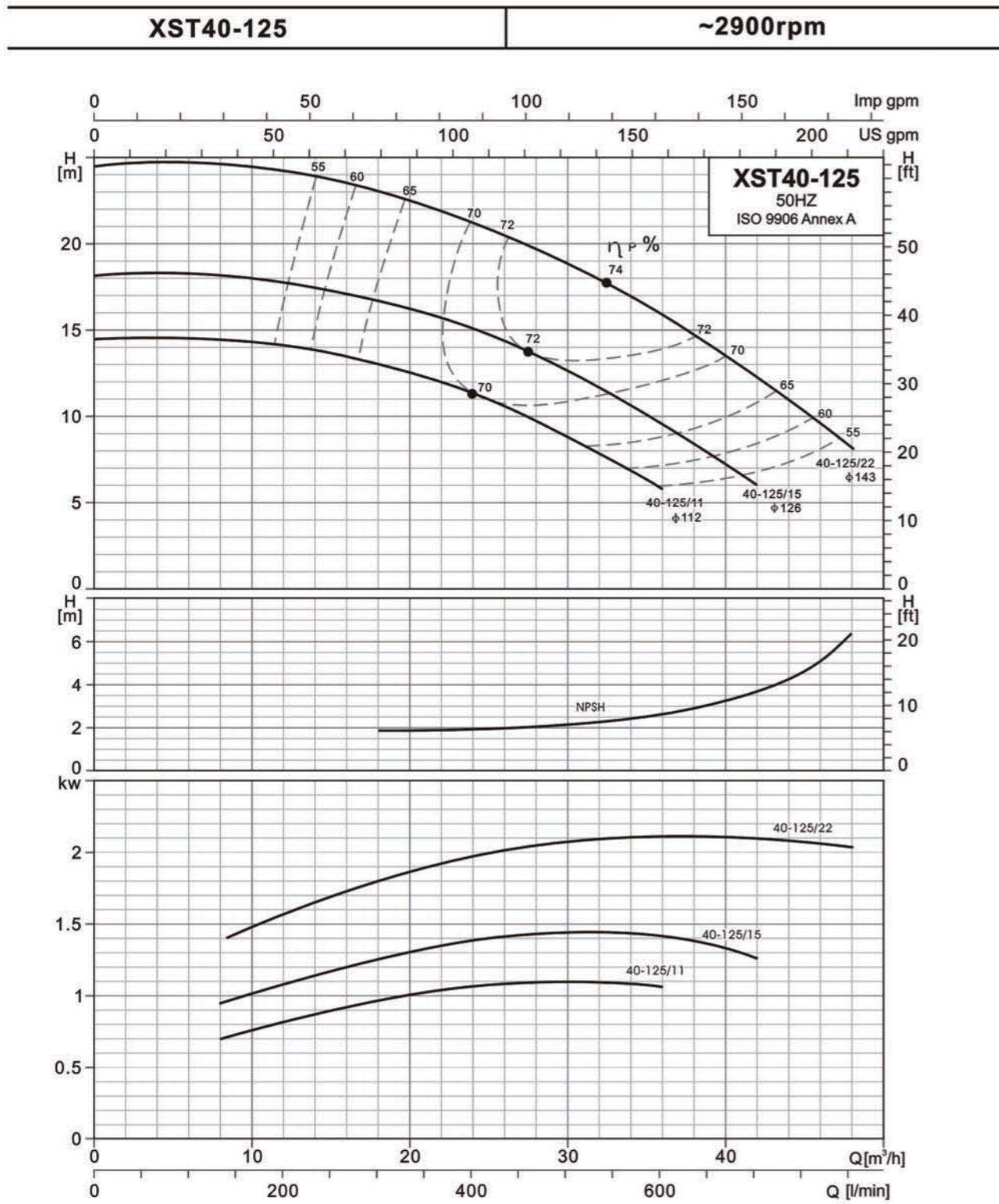


HYDRAULIC PERFORMANCE CURVES

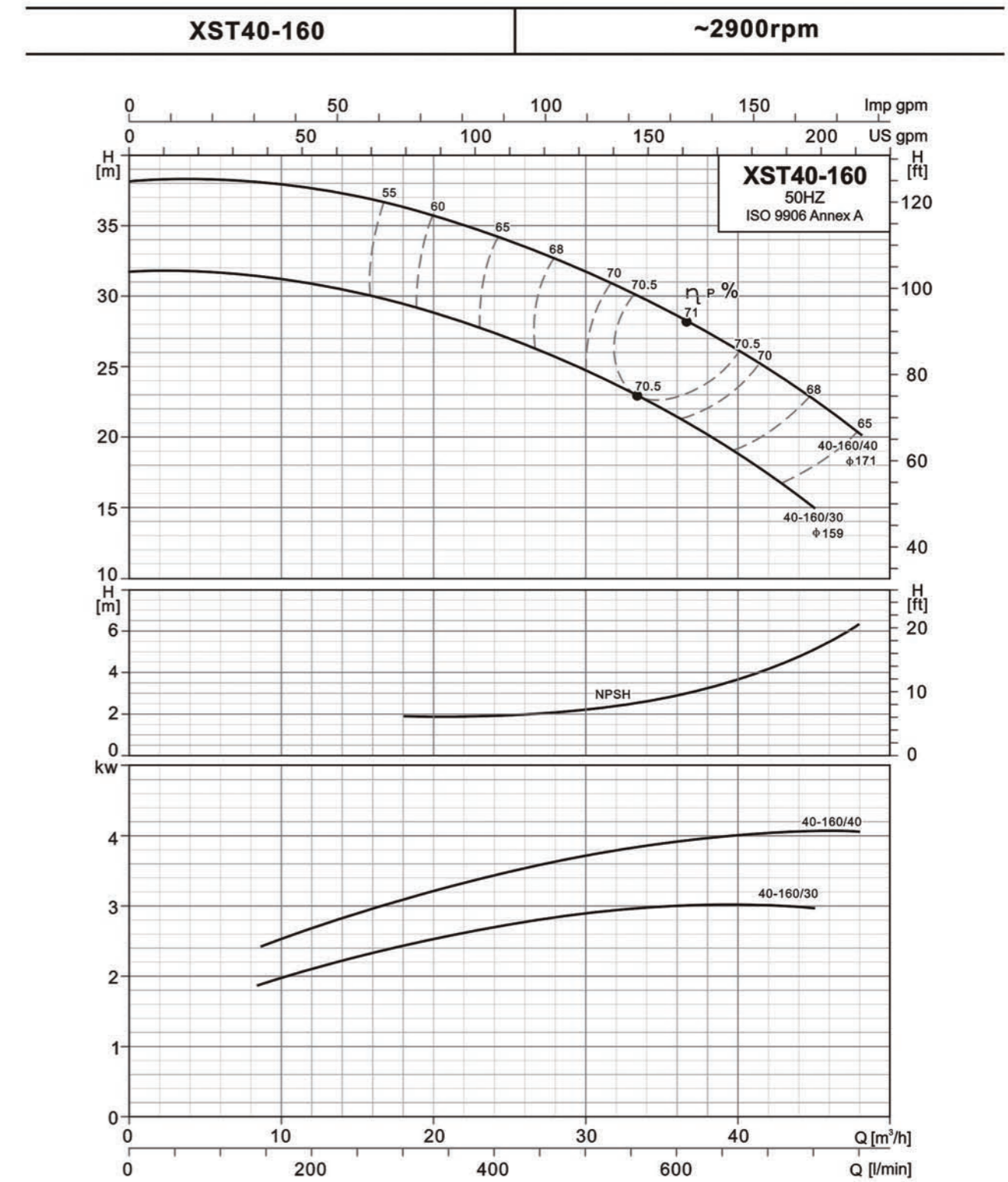




HYDRAULIC PERFORMANCE CURVES

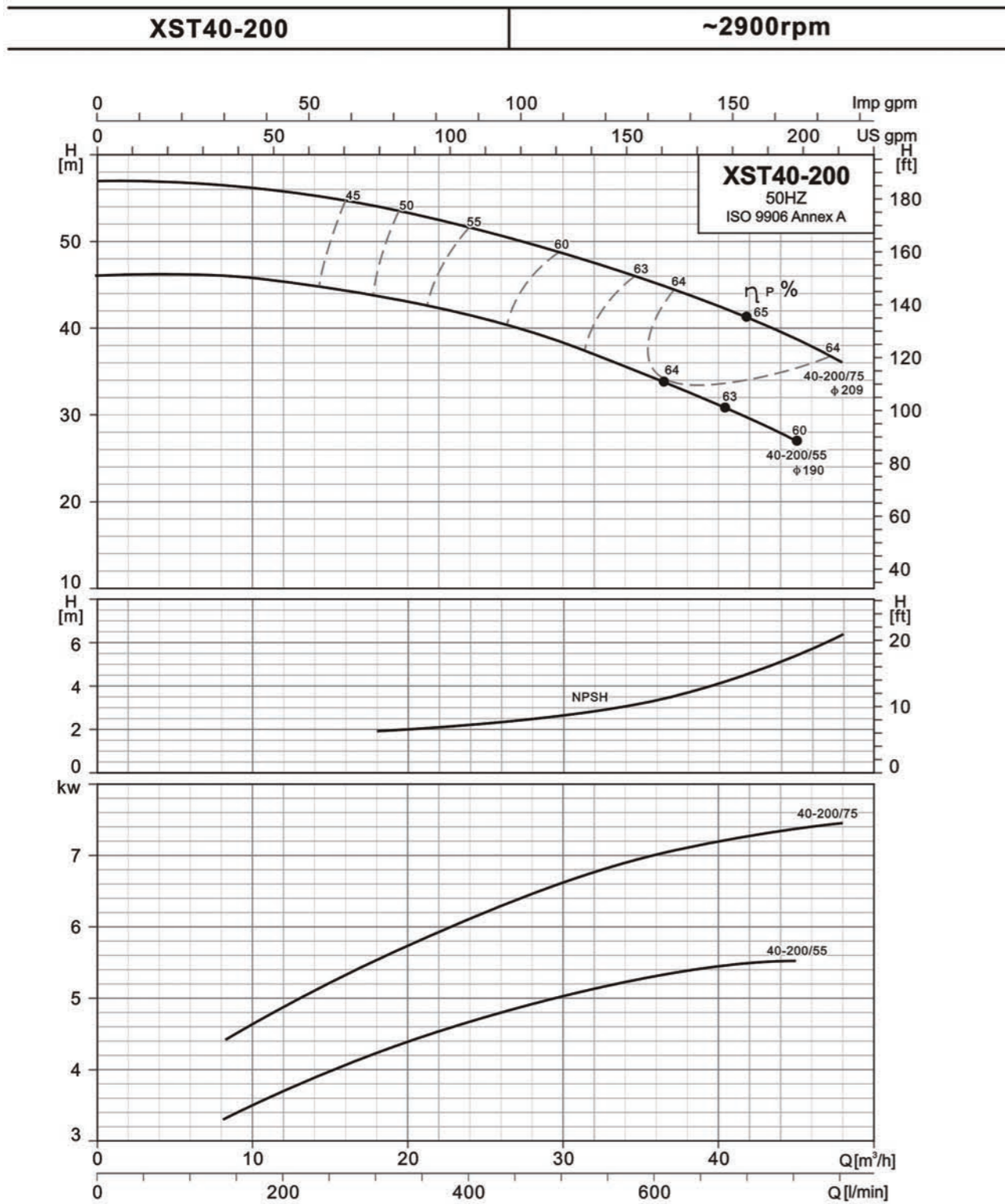


HYDRAULIC PERFORMANCE CURVES

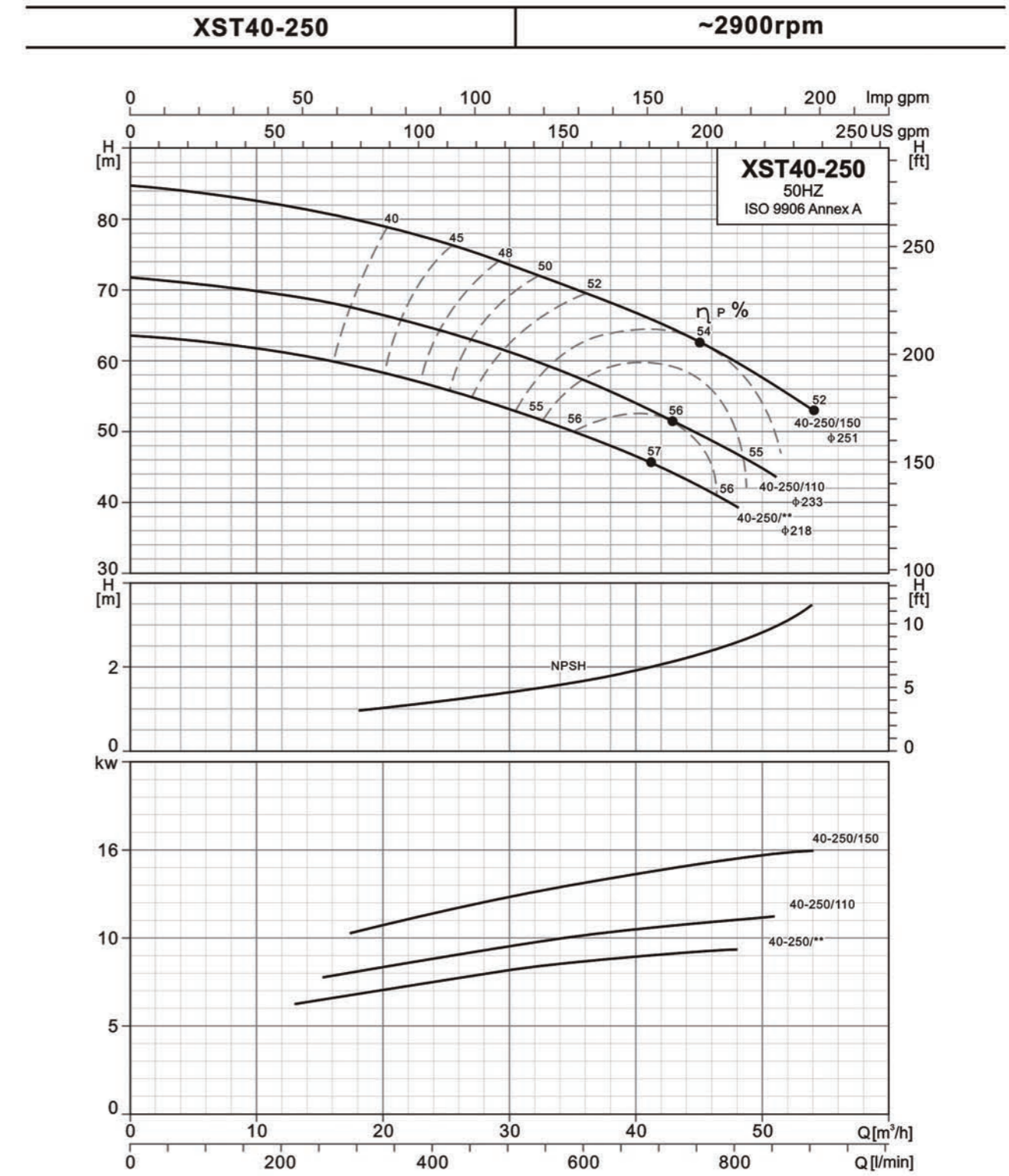




HYDRAULIC PERFORMANCE CURVES

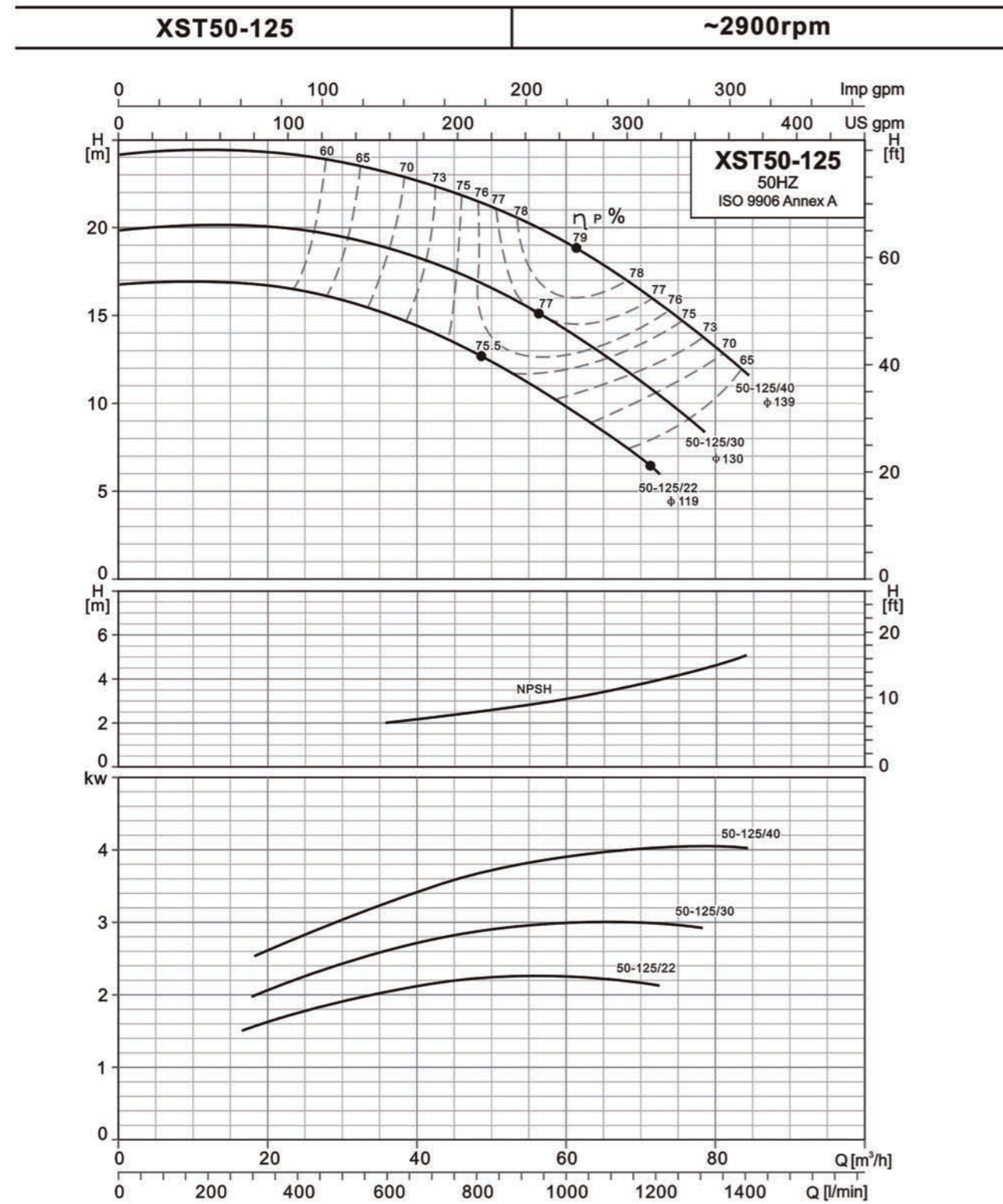


HYDRAULIC PERFORMANCE CURVES

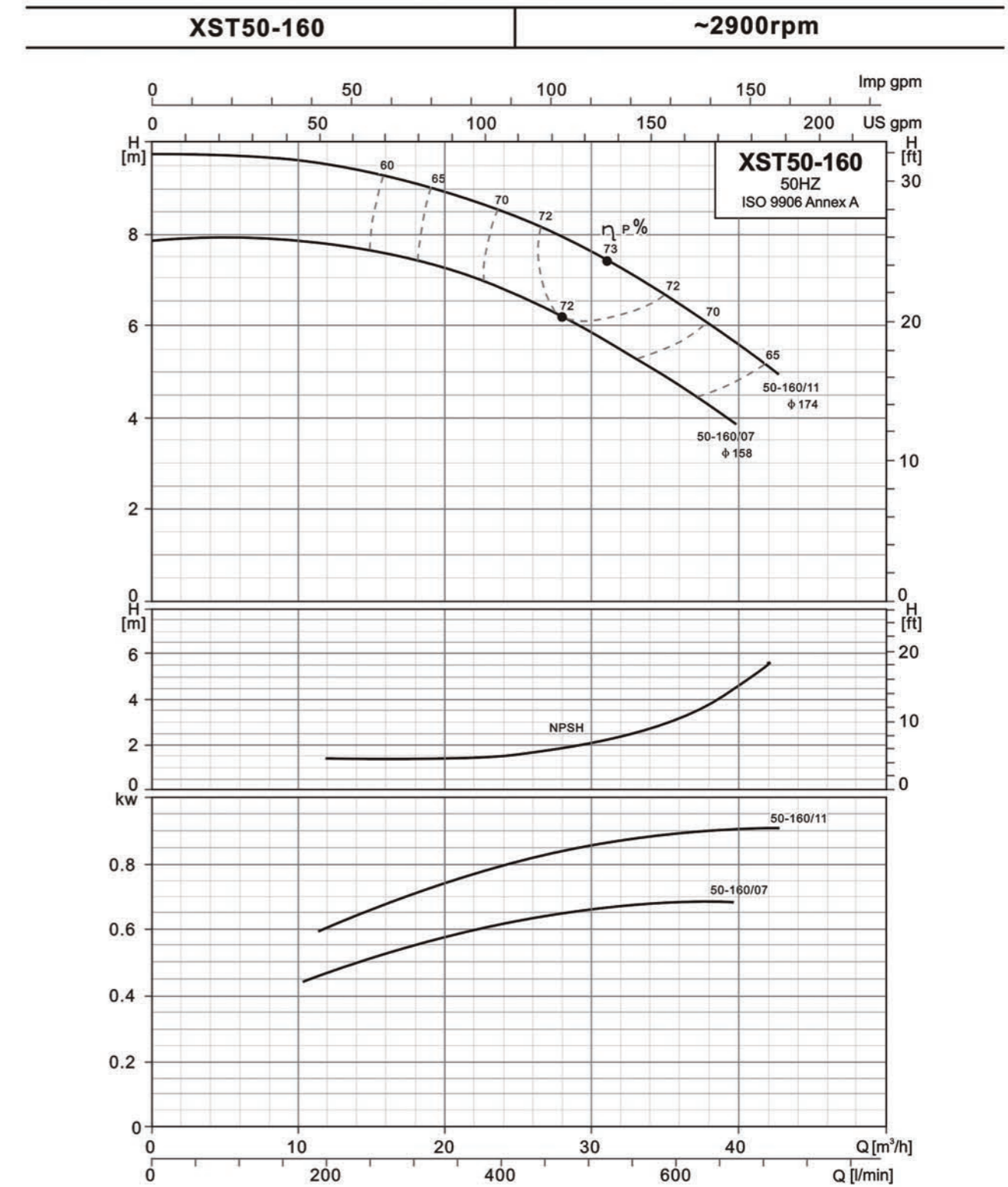




HYDRAULIC PERFORMANCE CURVES

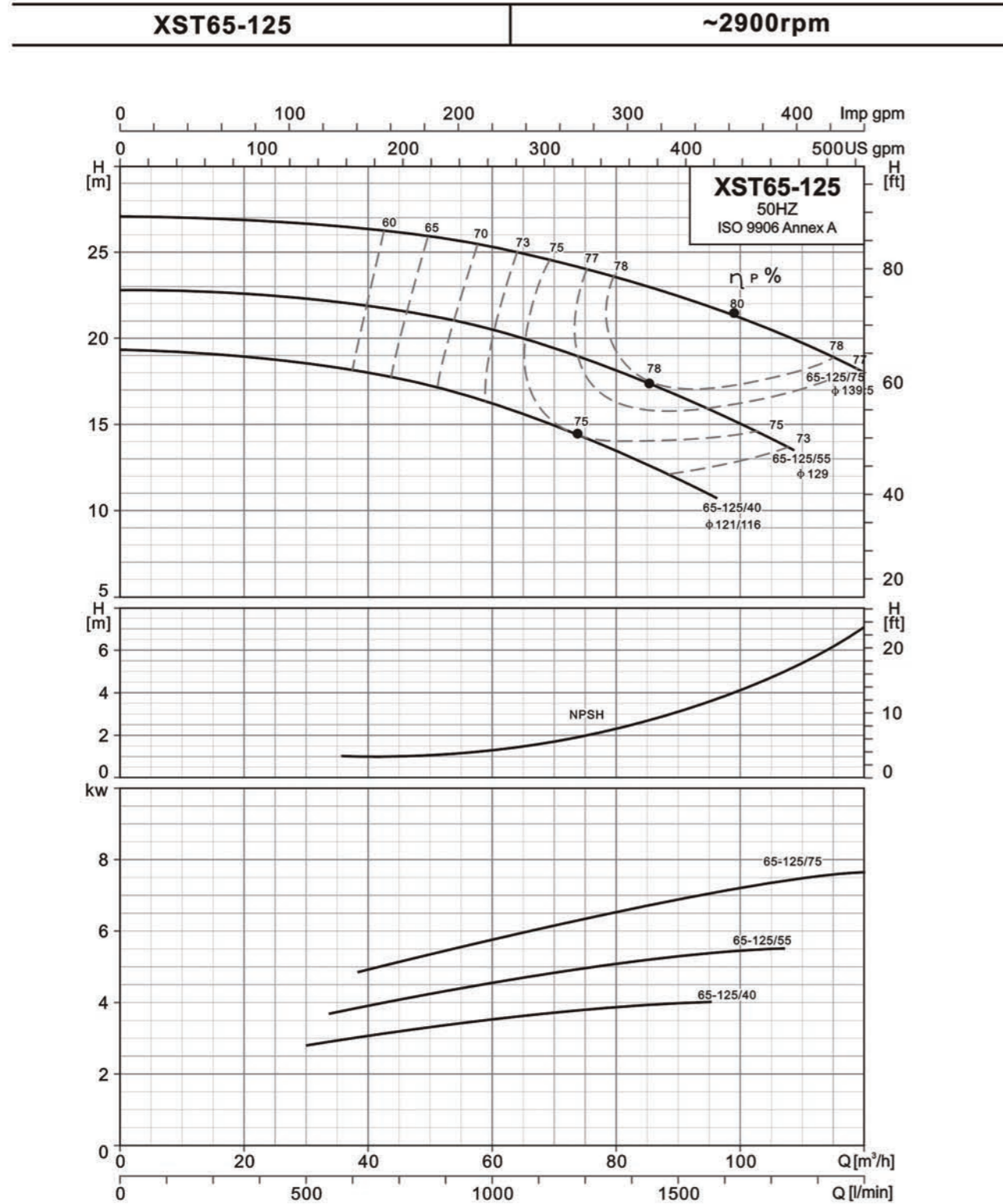


HYDRAULIC PERFORMANCE CURVES





HYDRAULIC PERFORMANCE CURVES



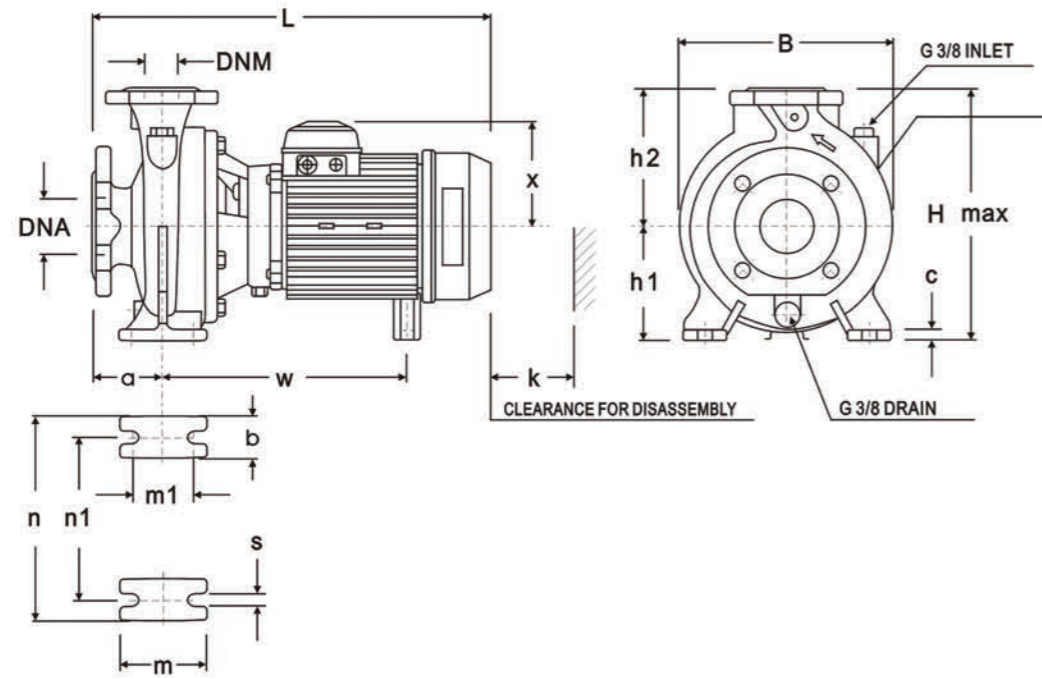
INSTALLATION DIMENSIONS

PUMP TYPE	PUMP						BASE										MAX.			
	DNM	DNA	a	h2	w	x	b	c	c1	h1	m	m1	n	n1	s	s1	B	H	L	K
XST32-125/07	32	50	80	140	235	129	50	12	-	112	100	70	190	140	14	-	233	252	443	86
XST32-125/11	32	50	80	140	235	129	50	12	-	112	100	70	190	140	14	-	233	252	443	86
XST32-160/15	32	50	80	160	235	129	50	12	-	132	100	70	240	190	14	-	235	292	443	86
XST32-160/22	32	50	80	160	235	129	50	12	-	132	100	70	240	190	14	-	235	292	443	86
XST32-200/30	32	50	80	180	283	121	50	12	-	160	100	70	240	190	14	-	285	340	461	86
XST32-200/40	32	50	80	180	290	133	50	12	-	160	100	70	240	190	14	-	285	340	461	86
XST40-125/11	40	65	80	140	235	129	50	12	-	112	100	70	210	160	14	-	233	250	443	88
XST40-125/15	40	65	80	140	235	129	50	12	-	112	100	70	210	160	14	-	233	252	443	88
XST40-125/22	40	65	80	140	235	129	50	12	-	112	100	70	210	160	14	-	233	252	443	88
XST40-160/30	40	65	80	160	283	121	50	12	-	132	100	70	240	190	14	-	250	292	461	88
XST40-160/40	40	65	80	160	290	133	50	12	-	132	100	70	240	190	14	-	250	292	461	88
XST40-200/55	40	65	100	180	311	150	50	12	-	160	100	70	265	212	14	-	285	240	553	88
XST40-200/72	40	65	100	180	311	150	50	12	-	160	100	70	265	212	14	-	285	240	553	88
XST40-250/92	40	65	100	225	278	191	65	14	-	180	125	95	320	250	15	-	335	405	604	107
XST40-250/110	40	65	100	225	278	191	65	20	-	180	125	95	320	250	15	-	335	405	604	107
XST47-250/150	40	65	100	225	208	232	50	22	20	180	260	210	318	254	15	23	335	412	688	107
XST50-125/22	50	65	100	160	235	129	50	12	-	132	100	70	240	190	14	-	255	292	463	92
XST50-125/30	50	65	100	160	285	121	50	12	-	132	100	70	240	190	14	-	255	292	481	92
XST50-125/40	50	65	100	160	292	133	50	12	-	132	100	70	240	190	14	-	255	292	507	92
XST50-160/55	50	65	100	180	313	150	50	12	-	160	100	70	265	212	14	-	285	340	553	92
XST50-160/75	50	65	100	180	313	150	50	12	-	160	100	70	264	212	14	-	285	340	553	92
XST50-200/92	50	65	100	200	280	191	50	12	-	160	100	70	265	212	15	-	305	360	604	92
XST50-200/110	50	65	100	200	280	191	50	20	-	160	100	70	265	212	15	-	305	360	604	92
XST50-250/150	50	65	100	225	208	232	50	22	20	180	260	210	318	212	15	23	340	412	688	107
XST50-250/185	50	65	100	225	208	232	50	25	20	180	304	254	318	212	13	23	340	412	732	107
XST50-250/220	50	65	100	225	208	232	50	28	20	180	304	254	318	212	13	23	340	412	732	107
XST65-125/40	65	80	100	180	292	133	65	14	-	160	125	95	280	212	14	-	285	340	507	105
XST65-125/55	65	80	100	180	313	150	65	14	-	160	125	95	280	212	14	-	285	340	553	105
XST65-125/75	65	80	100	180	313	150	65	14	-	160	125	95	280	212	14	-	285	340	553	105
XST65-160/92	65	80	100	200	278	191	65	14	-	160	125	95	280	212	15	-	331	360	604	112
XST65-160/110	65	80	100	200	278	191	65	20	-	160	125	95	280	212	15	-	331	360	604	112
XST65-160/150	65	80	100	200	208	232	50	22	-	160	260	210	318	254	15	23	331	392	688	112
XST65-200/150	65	80	100	225	208	232	50	22	20	180	260	210	318	254	15	23	335	412	688	112
XST65-200/185	65	80	100	225	208	232	50	25	20	180	304	254	318	254	15	23	335	412	732	112
XST65-200/220	65	80	100	225	208	232	50	28	20	180	304	254	318	254	15	23	335	412	732	112
XST65-250/220	65	80	100	250	208	232	50	28	40	200	304	254	318	254	15	23	332	450	732	112

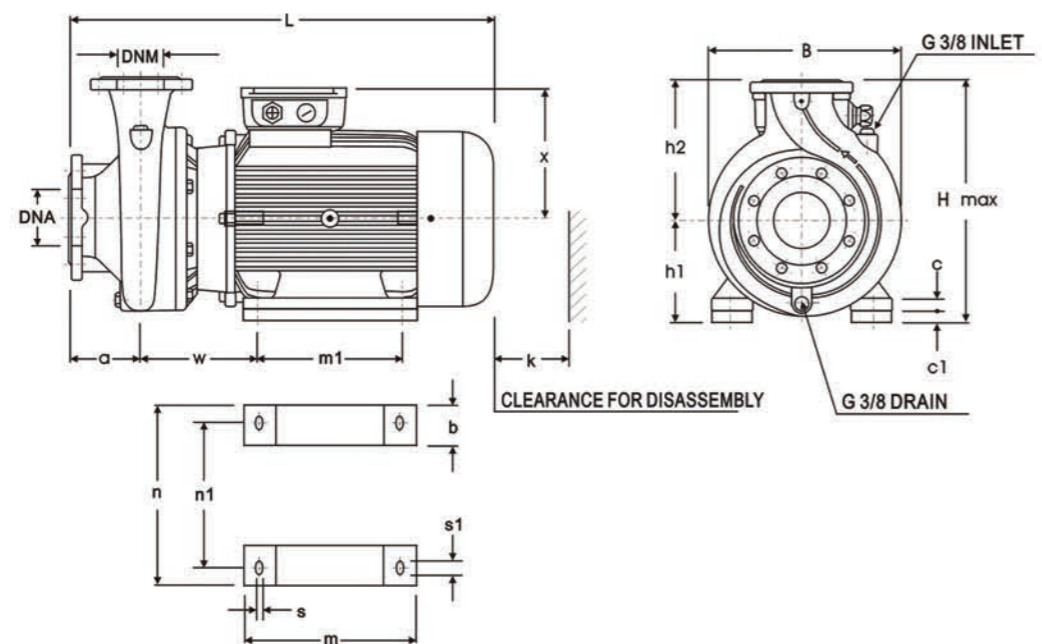


**INSTALLATION SKETCH**

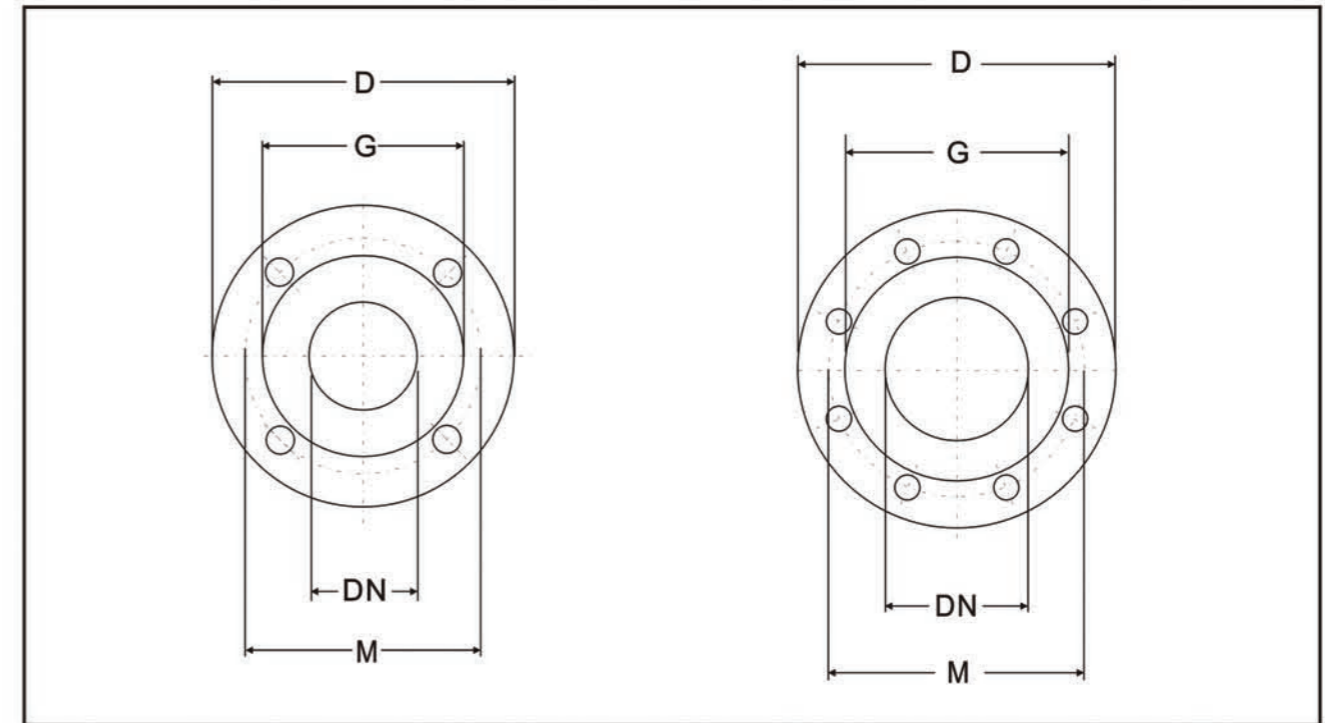
Up to 11 kW included



From 15 kW



**FLANGE DIMENSIONS**



**PN16 FLANGES**

DN	D	M	G	HOLES		MAX. THICKNESS
				N°	∅	
32	140	100	78	4	18	18
40	150	110	88	4	18	18
50	165	125	102	4	18	20
65	185	145	122	4	18	20

**PN16 FLANGES**

DN	D	M	G	HOLES		MAX. THICKNESS
				N°	∅	
80	200	160	138	8	18	22
100	220	180	158	8	18	22

REMARK: \_\_\_\_\_

\_\_\_\_\_

\_\_\_\_\_

\_\_\_\_\_

\_\_\_\_\_

\_\_\_\_\_

\_\_\_\_\_

\_\_\_\_\_

\_\_\_\_\_

\_\_\_\_\_

\_\_\_\_\_

\_\_\_\_\_

\_\_\_\_\_

\_\_\_\_\_

\_\_\_\_\_

\_\_\_\_\_

\_\_\_\_\_

\_\_\_\_\_

\_\_\_\_\_

\_\_\_\_\_

\_\_\_\_\_

\_\_\_\_\_

\_\_\_\_\_

\_\_\_\_\_

\_\_\_\_\_

\_\_\_\_\_